

# National Scout & Guide Fellowship UK

27<sup>th</sup> Western European Sub-Region Gathering  
8<sup>th</sup> – 12<sup>th</sup> October 2018 - Eastbourne, England.

## Newsletter No 3

Are you ready for registration? Are your travel plans in place?

---

Are you looking forward to meeting old friends?  
Are you looking forward to making new friends?  
Are you looking forward to the

**“Flowering of Friendship”**



Registration Form & Deposit to be received by 1<sup>st</sup> March 2018.

Please complete one form per person.

Registration Fee includes: Breakfast & Dinner, starting with dinner on Monday 8<sup>th</sup> Oct. and ending with breakfast on Friday 12<sup>th</sup> Oct.

A choice of outing.

Accommodation in Double, Twin & Single rooms, all ensuite

Are you ready to register?  
Forms can be downloaded, completed and sent by email or printed and sent by post

Mrs Janette Kenworthy  
11 Burges Close  
Marnhull  
Sturminster Newton  
Dorset DT10 1QQ  
England

# Eastbourne = Easy Access

by Road, Sea, Air, Rail.

Please send us your TRAVEL PLANS before 1<sup>ST</sup> August  
2018

Please arrive after 10.30am.

~~~~~

## Travelling by car:

We will be ready to meet you in the unloading bay at the Claremont Hotel, Burlington Road, Eastbourne BN21 3DJ

## Travelling by boat:

The nearest Ferry Ports are Newhaven or Dover.

[www.directferries.co.uk/newhaven dieppe ferry](http://www.directferries.co.uk/newhaven_dieppe_ferry)

[www.directferries.co.uk/calais dover ferry](http://www.directferries.co.uk/calais_dover_ferry)

[www.directferries.co.uk/dunkerque dover ferry](http://www.directferries.co.uk/dunkerque_dover_ferry)

## Travelling by plane:

The nearest airport is London Gatwick.

[www.easyjet.com](http://www.easyjet.com)

[www.ryanair.com](http://www.ryanair.com)

From Gatwick, you will need to get a train to Eastbourne, see below.

## Travelling by train:

The nearest station is Eastbourne.

[www.nationalrail.co.uk](http://www.nationalrail.co.uk)

[www.eurostar.com](http://www.eurostar.com)

If you come by Eurostar, there is a direct rail link to Eastbourne from Ashford International. You may need to get a local train from Ebbsfleet International to Ashford International. For details see:

[www.national rail.co.uk](http://www.nationalrail.co.uk)

There will be people at Eastbourne Station meeting point to direct you to the taxis.



# Travel Fact Sheet

**Eurostar:** Trains from Europe stop at either Ebbsfleet International or Ashford International Station.

Direct trains to Eastbourne run from Ashford International. They run every hour, journey time approx. 1hr 15 mins

**Trains:** from London Victoria direct to Eastbourne, run every half hour, journey time 1hr 28mins

**Flights:** into Gatwick Airport from most countries in Europe.

Trains from Gatwick Airport, Platform 2/3 run every hour, journey time 1hr 20mins

## Flights into Gatwick.

| <b><u>From</u></b>    | <b><u>Airline</u></b> |
|-----------------------|-----------------------|
| Brussels              | Easy Jet              |
| Amsterdam             | Easy Jet              |
| Luxembourg            | Easy Jet              |
| Isle of Mann          | Easy Jet              |
| Dusseldorf or Cologne | Easy Jet              |
| Paris, Nantes, Lyon.  | Easy Jet              |
| Geneva                | Easy Jet              |
| Barcelona             | Easy Jet              |
| Basle, Zurich         | Easy Jet              |
| Athens                | Easy Jet              |
| Cork                  | Ryan Air              |
| Shannon               | Ryan Air              |

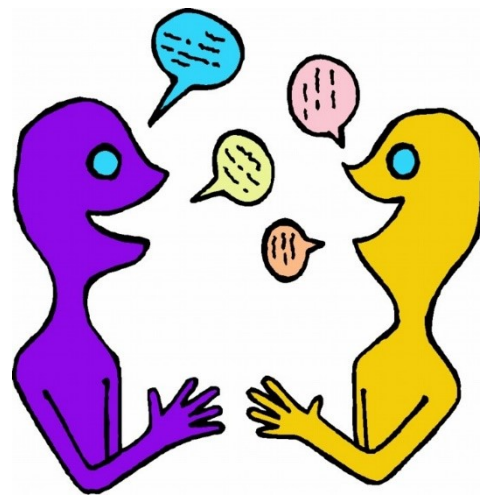
Eastbourne Rail Station to the Claremont Hotel half a mile, Taxis available from the station.

Driving from Dover to Eastbourne, distance 73 miles. Driving time 1 hour 54mins.

Driving from Newhaven to Eastbourne, distance 13 miles. Driving time 30mins.

# Join in:

You will be with friends  
there will be time to talk  
time to listen.



## We want to know about:

Your organisation

NSGF

Project

## Be prepared to tell us:

Who you are. How you work. What you do.



**Tell us about your work with:**  
Scouting, Guiding, Community

**Tell us about your projects:**  
Local, National, International

**Learn more about:**  
World Events, Europe Region  
Western Europe Sub-Region

**Each Other**